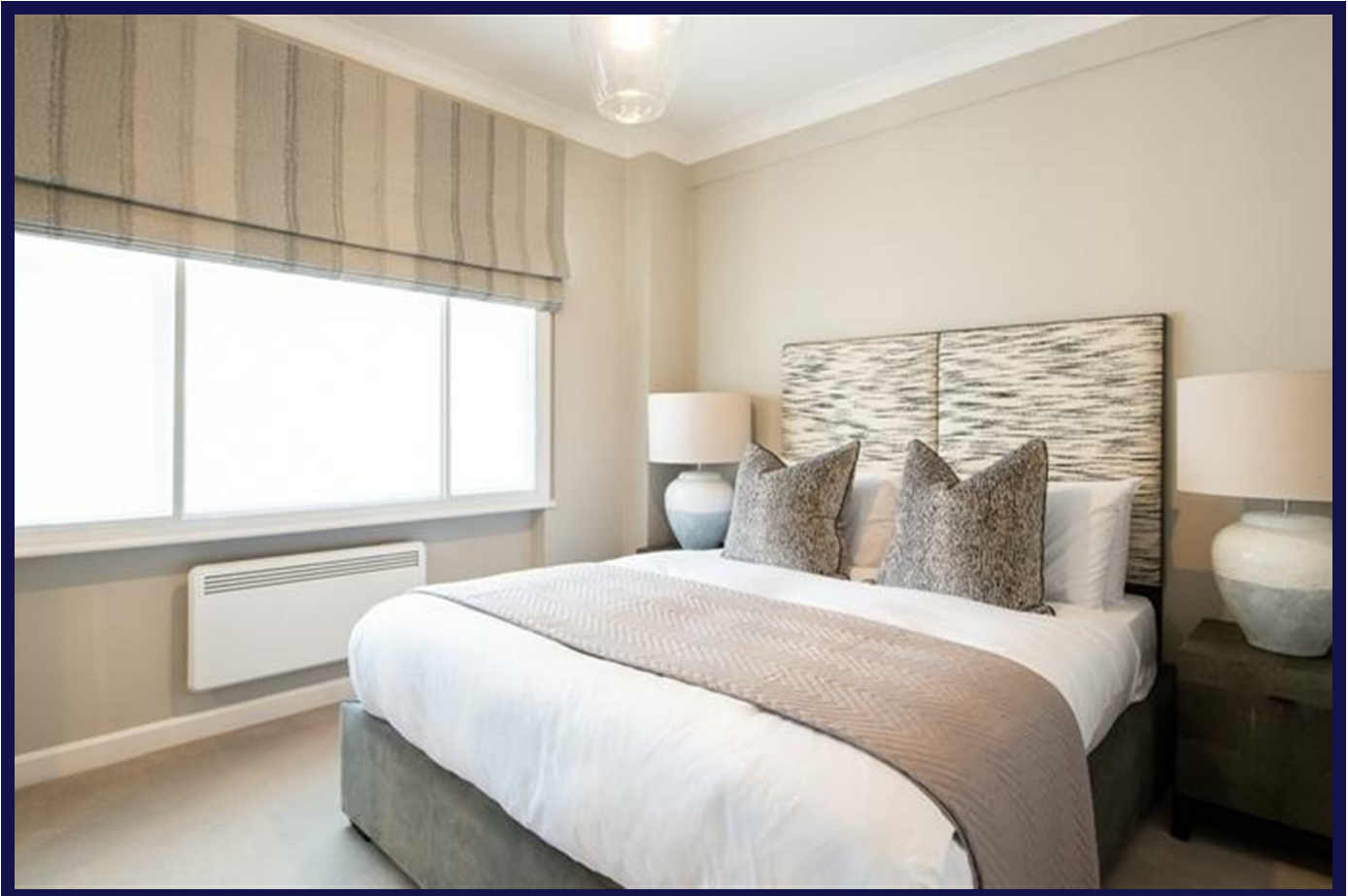


Hill Street, London, W1J 5NA



Features:

- **On Site Building Manager**
- **Video Entry | Pet Friendly**
- **lift service**
- **superfast broadband**
- **offered furnished or unfurnished**
- **high quality finish**

Description:

This BRAND NEW Interior Designed apartment is set over 1203sq ft. and offers, three spacious double bedrooms, two modern fitted bathrooms, spacious reception room, and a unique kitchen with further benefits of storage space and access to a private gated communal garden. Hill Street, benefits from spacious living accommodation, lift service, on-site building manager, and is nestled conveniently between two of London's parks Hyde Park and Green Park. The transport links include underground stations which are Green Park Station and Bond Street station, Marble Arch Station all within a short stroll away.

£7,410 Per Month